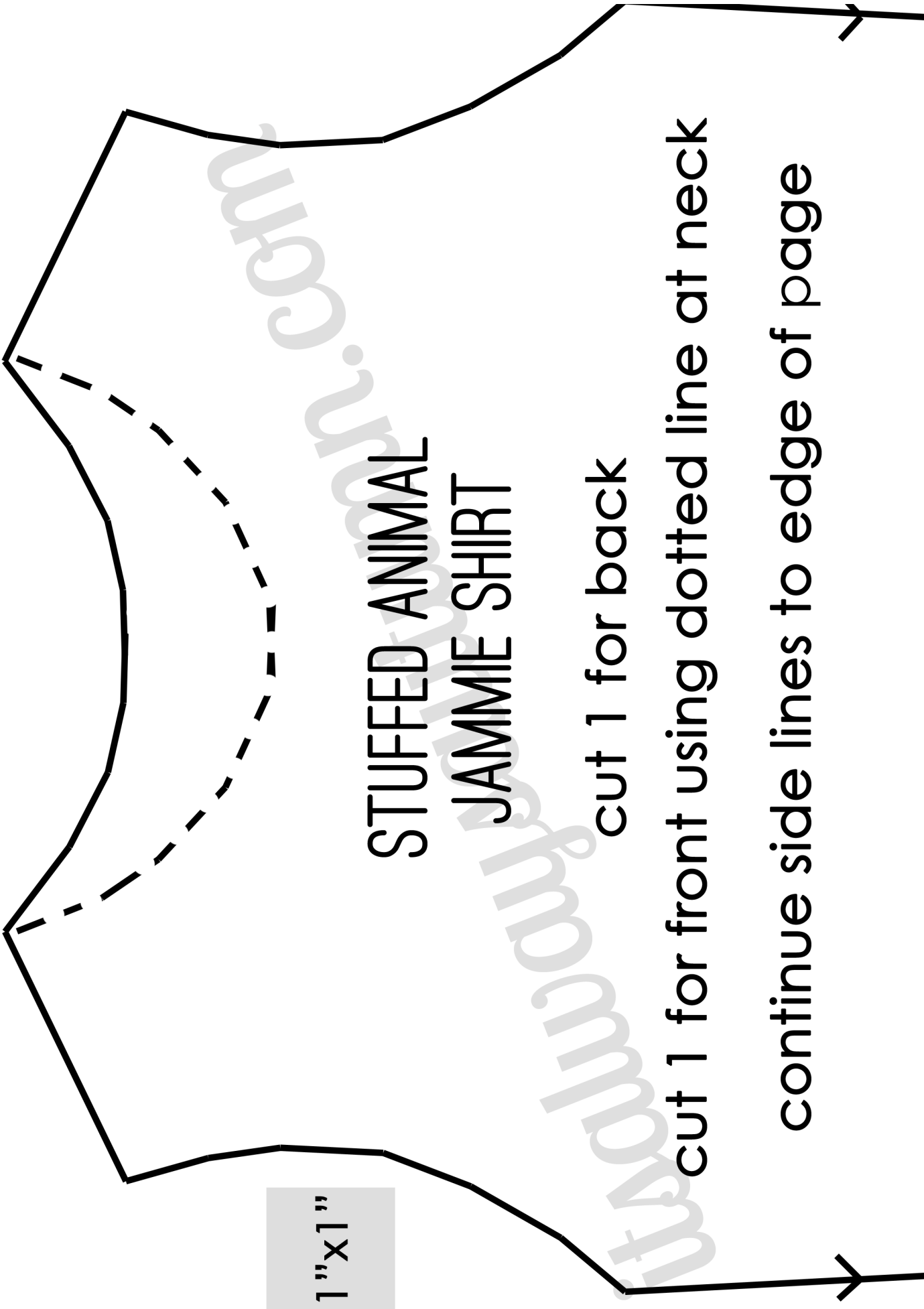


also cut ribbing: 2 at 8" x 1.5" , 1 at 16" x 1.5"



**STUFFED ANIMAL  
JAMMIE SHIRT**

cut 1 for back

cut 1 for front using dotted line at neck

continue side lines to edge of page



STUFFED  
ANIMAL  
JAMMIE SHORTS

cut 2 for back  
mark dots with pins  
on **back** pieces

cut 2 using  
dotted line at top  
for front

1"x1"