

FRONT

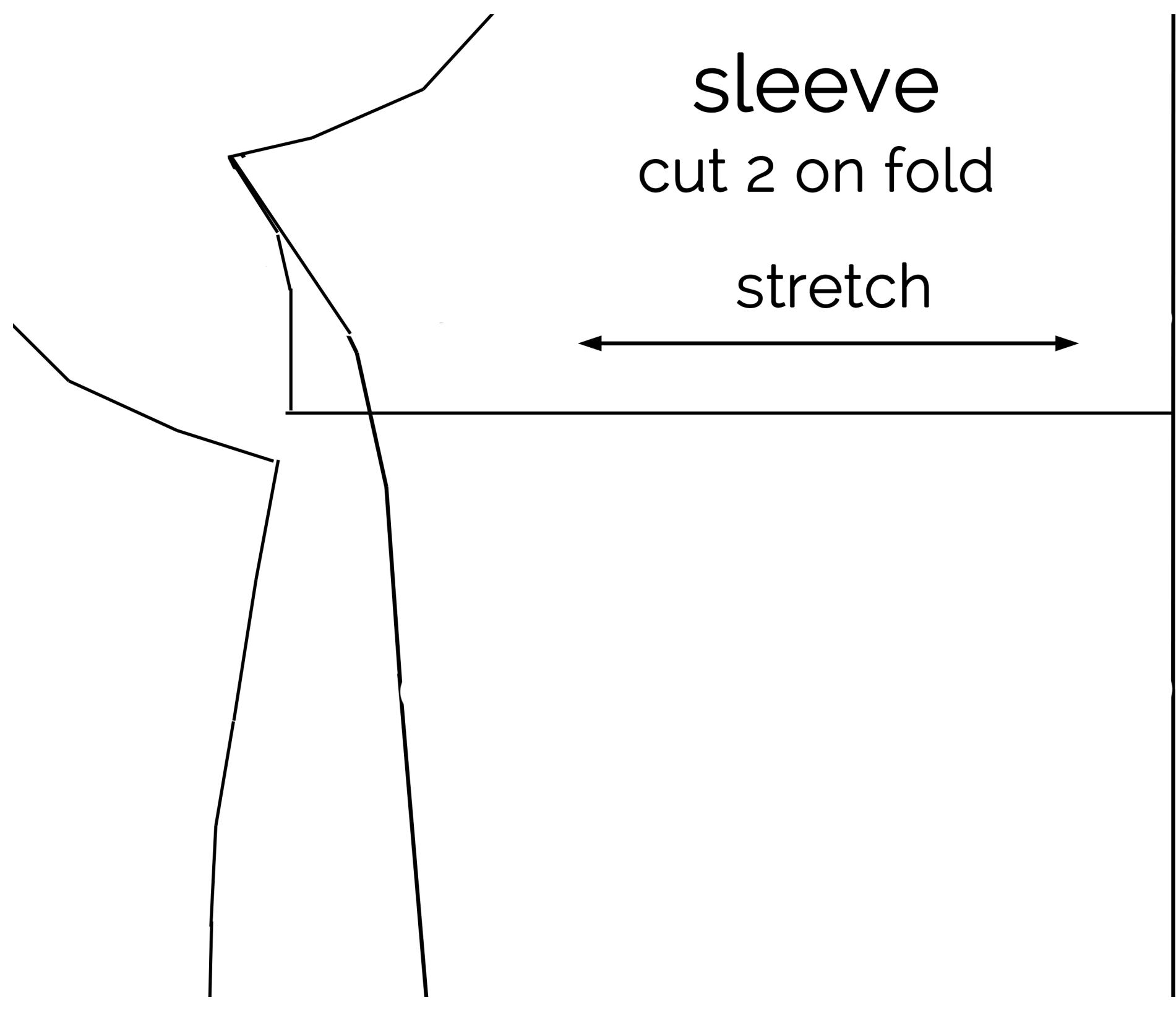
THE V-NECK TEE

shirt

cut 2 on fold,
one front + one back

sleeve
cut 2 on fold

stretch



FOLD

› it's always
autumn

stretch





A diagram of a neck binding pattern piece. It consists of a long, narrow rectangle with a horizontal line at the top. To the left of the rectangle is a vertical line that is slightly curved. To the right of the rectangle is the text 'neck binding cut one on fold'. The word 'FOLD' is written inside the top-left corner of the rectangle.

FOLD

neck binding
cut one
on fold



