

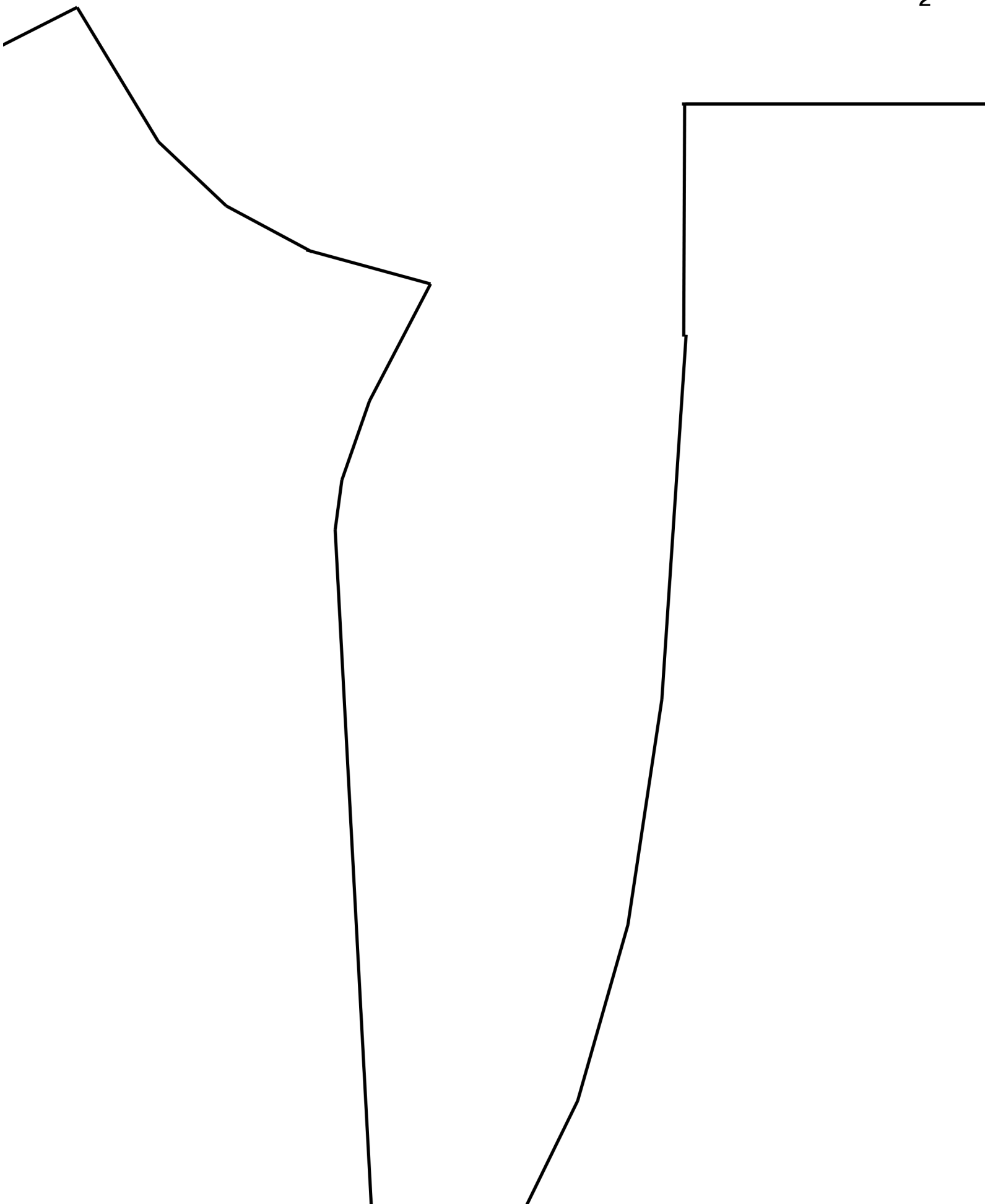
FOLD

**RUFFLE TOP
LOWER SHIRT**
cut 2 on fold

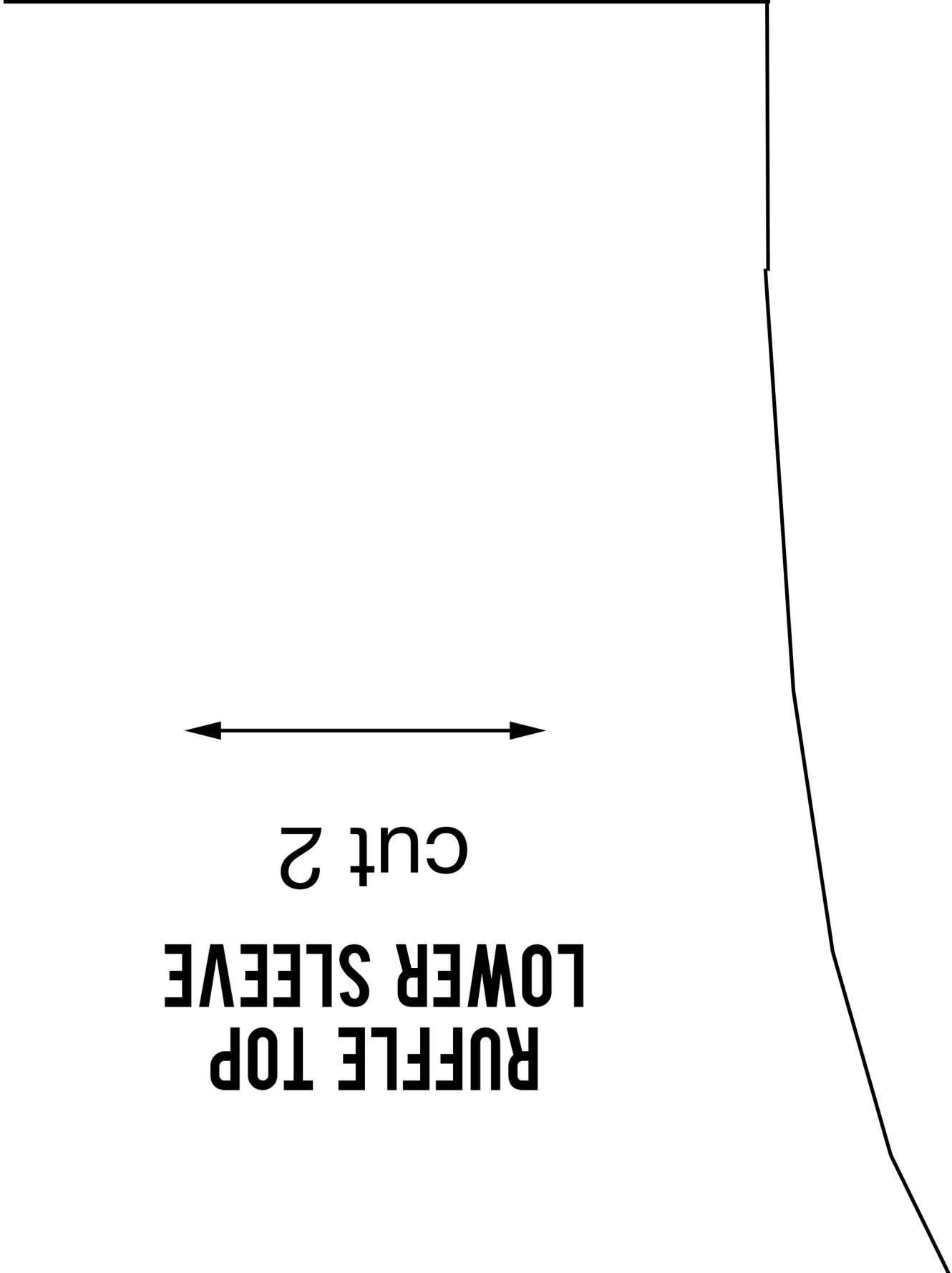
› it's always
autumn

1 in x 1 in





RUFFLE TOP
LOWER SLEEVE
cut 2





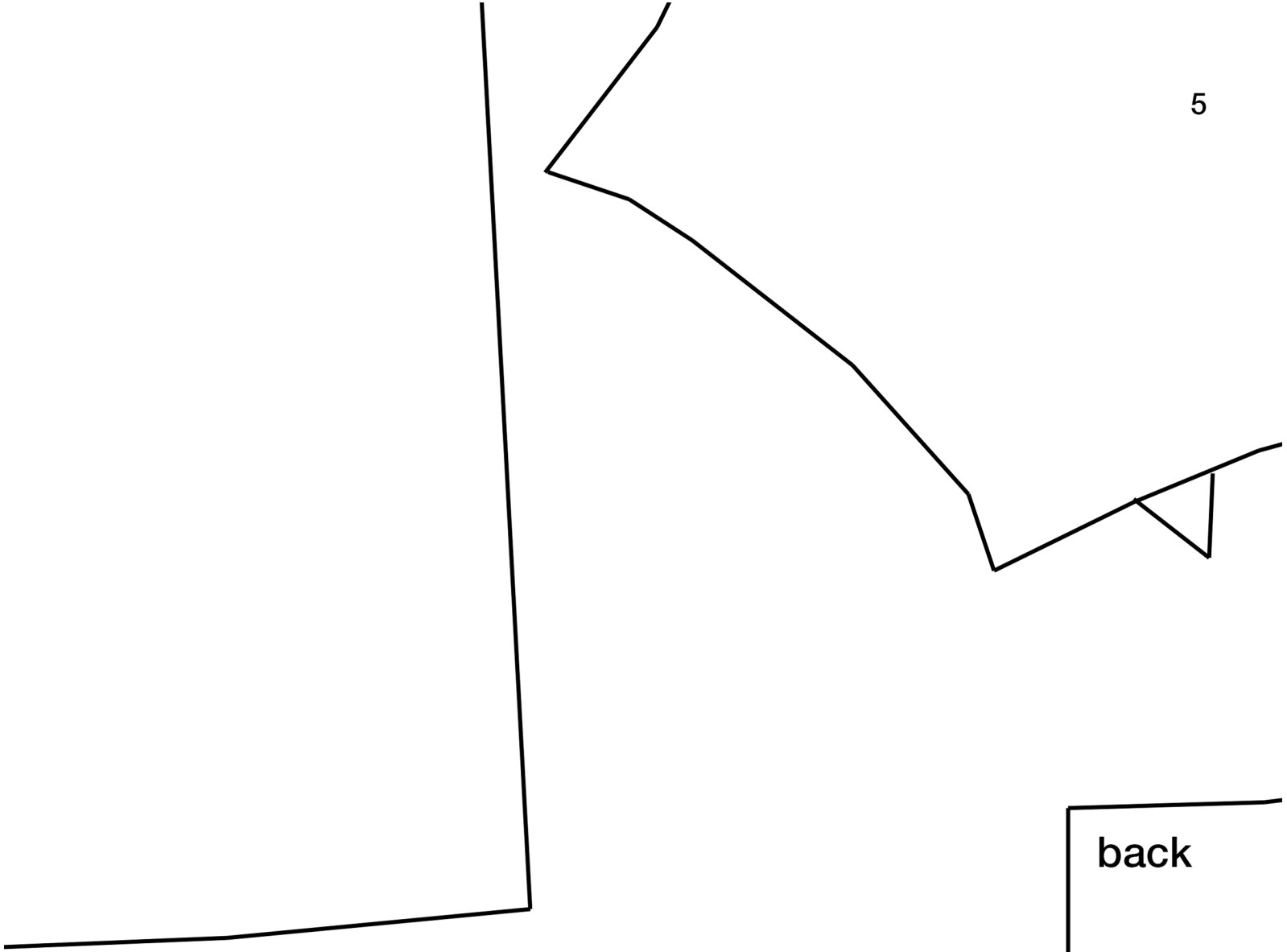
stretch



**RUFFLE TOP
UPPER SLEEVE**



cut 2



back

front

FOLD

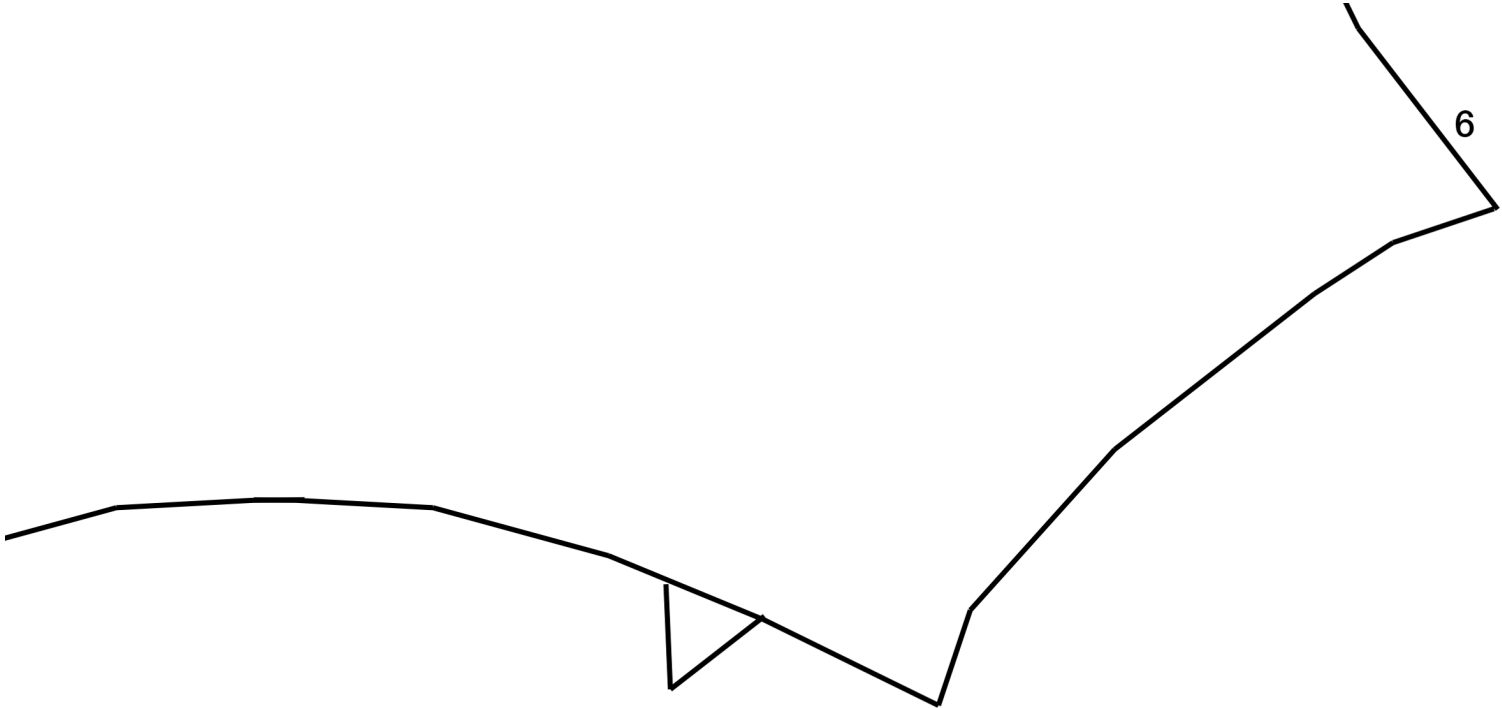
ALSO CUT:

2 Shirt ruffles @ 24 inches wide by 3 inches tall

2 Sleeve ruffles @ 13 inches wide by 3 inches tall

1 Neck binding @ 16 inches wide by 1.5 inch tall

(stretch goes along width)



6



**RUFFLE TOP
UPPER SHIRT**
cut 2 on fold

