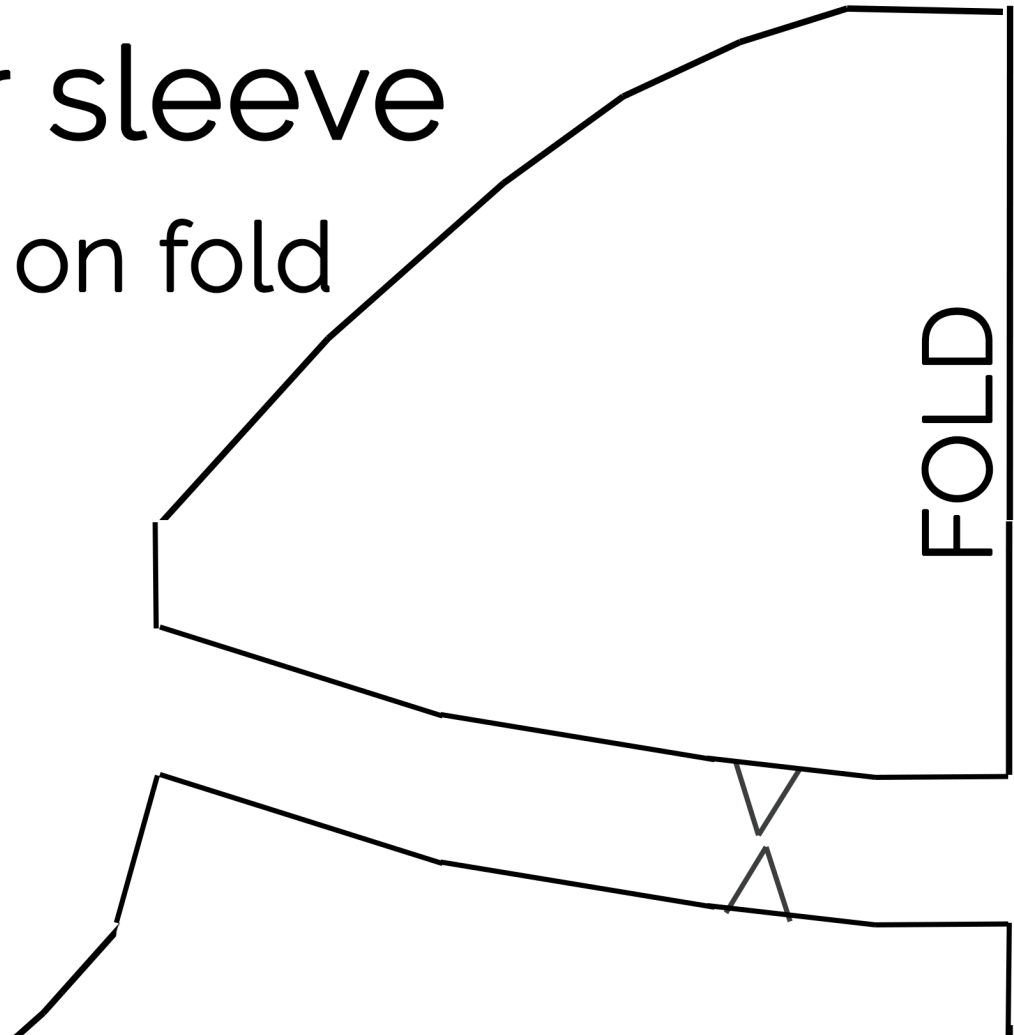


BACK

upper sleeve  
cut 2 on fold





FRONT

upper shirt  
cut 2 on fold

# WOMEN'S RUFFLE TOP

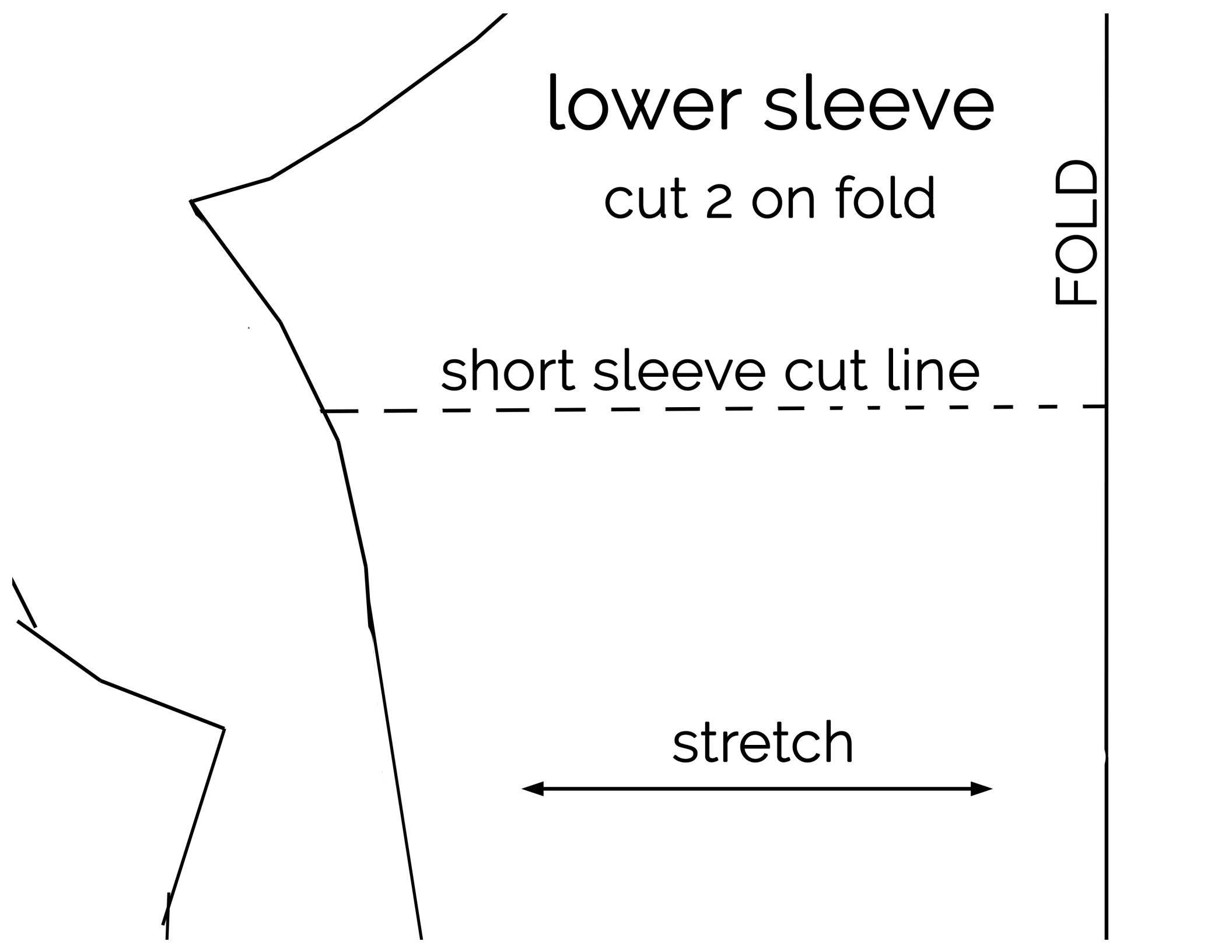
lower sleeve

cut 2 on fold

short sleeve cut line

FOLD

stretch



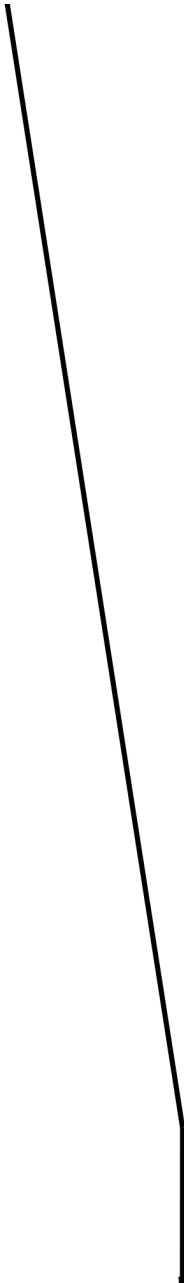
FOLD

>it's always  
*autumn*

stretch



lower shirt  
cut 2 on fold



3/4 sleeve

1 in





also cut:

**2 shirt ruffles** at  
4 in high and 27 in wide

**2 sleeve ruffles** at  
4 in high and 16 in wide

**neckbinding** at  
1.75 in high and 23 in wide  
(stretch goes along width)