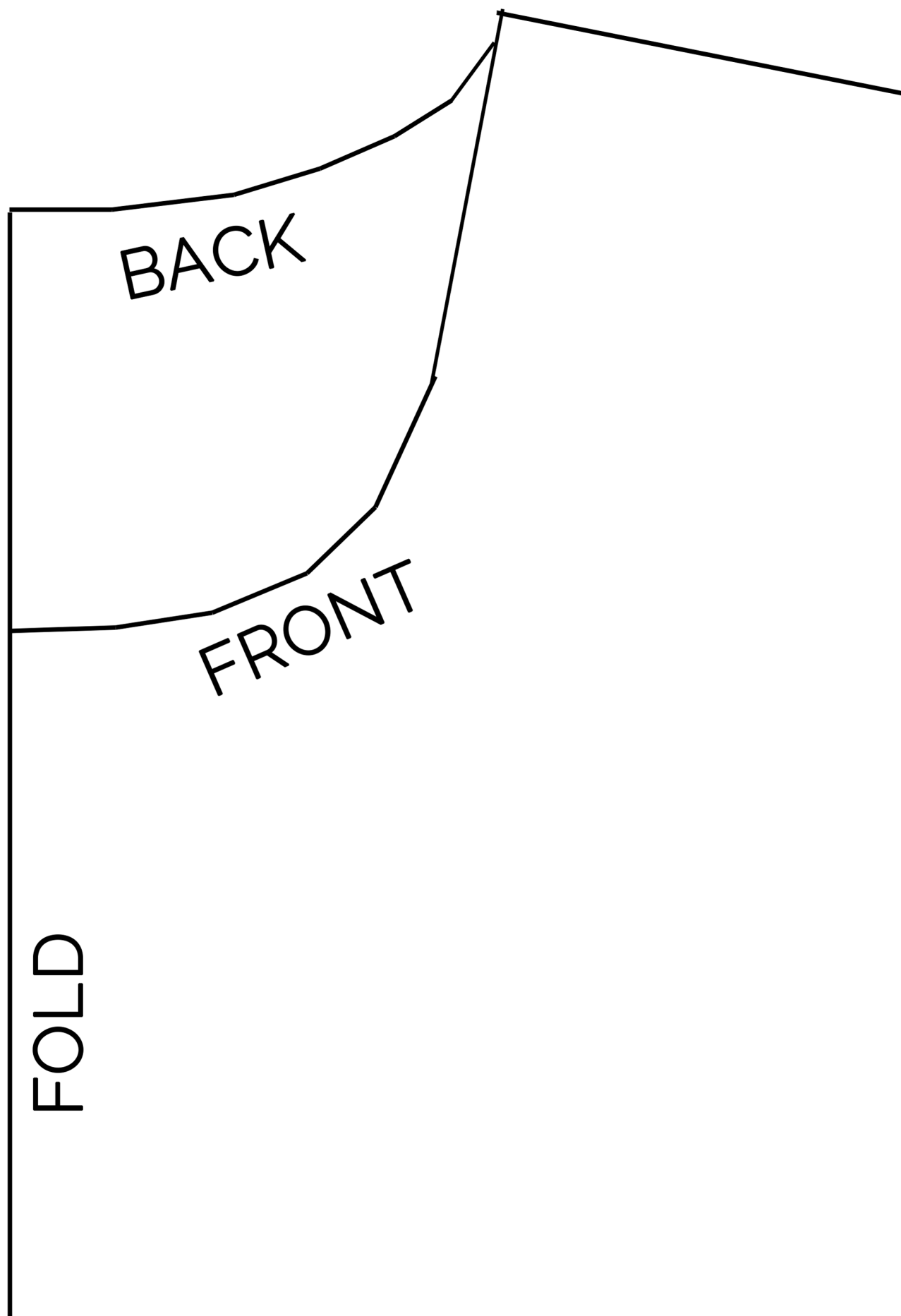
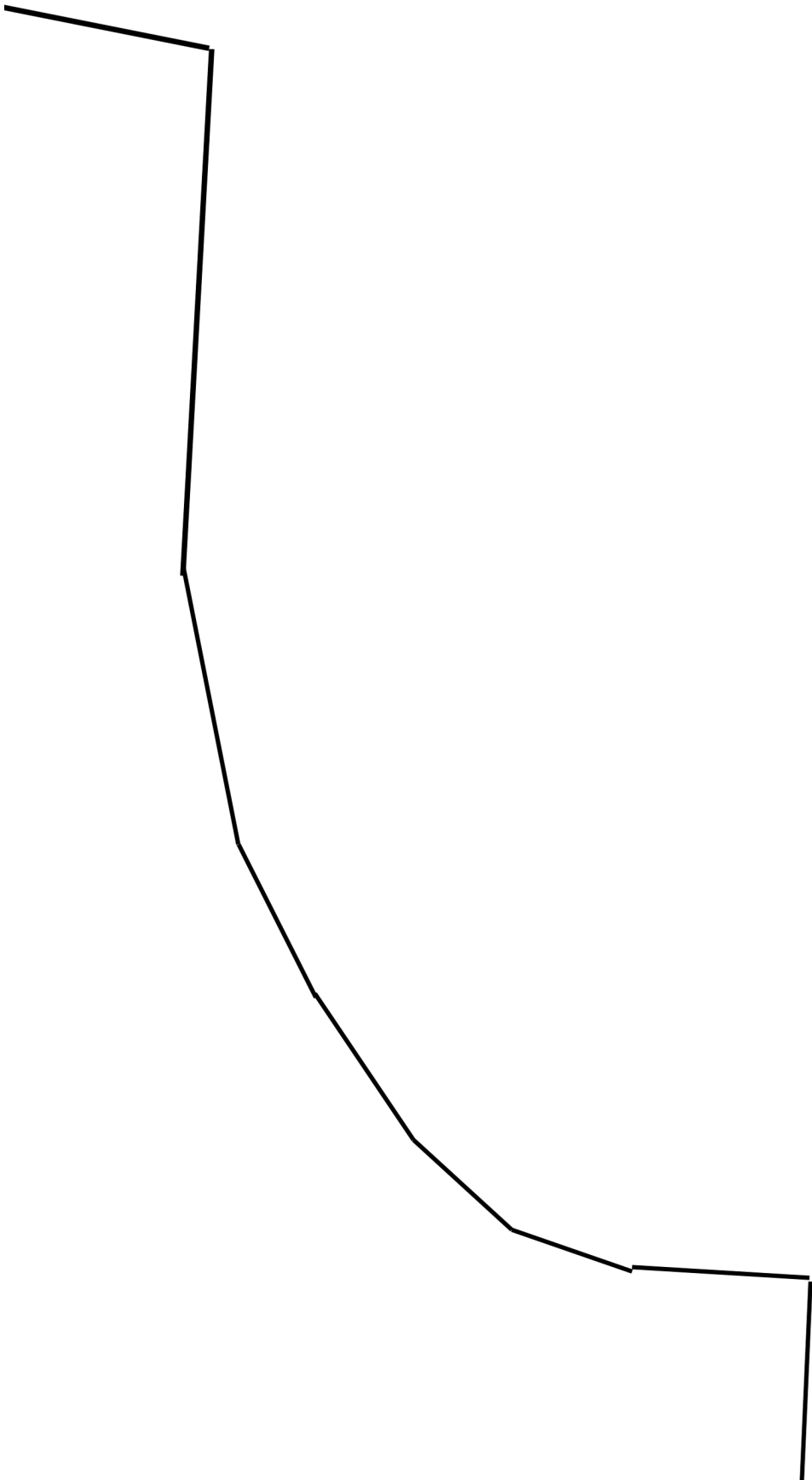
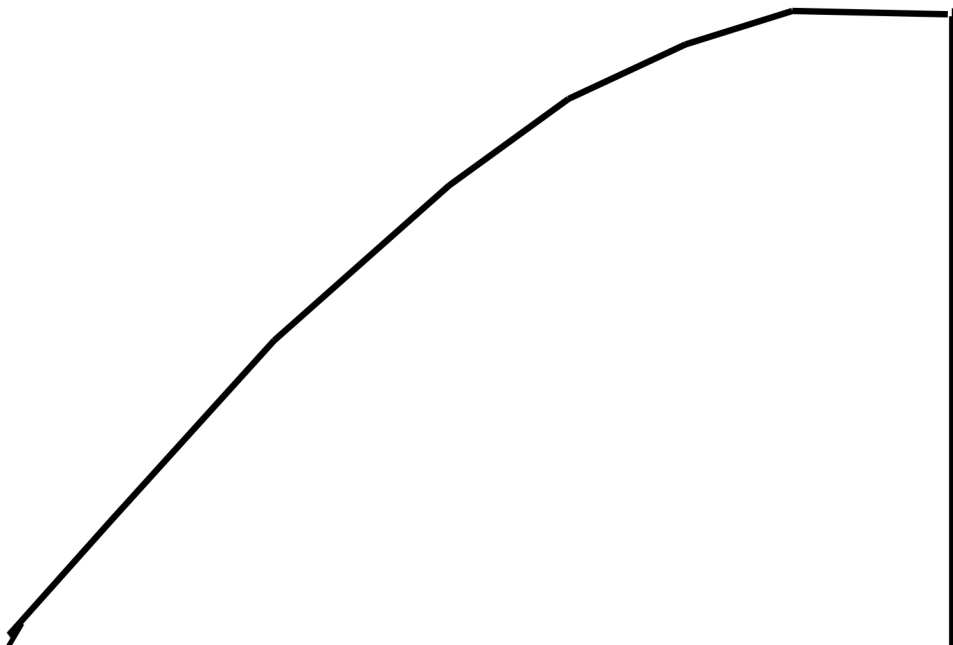


1 in







# LANTERN SLEEVE SWEATER

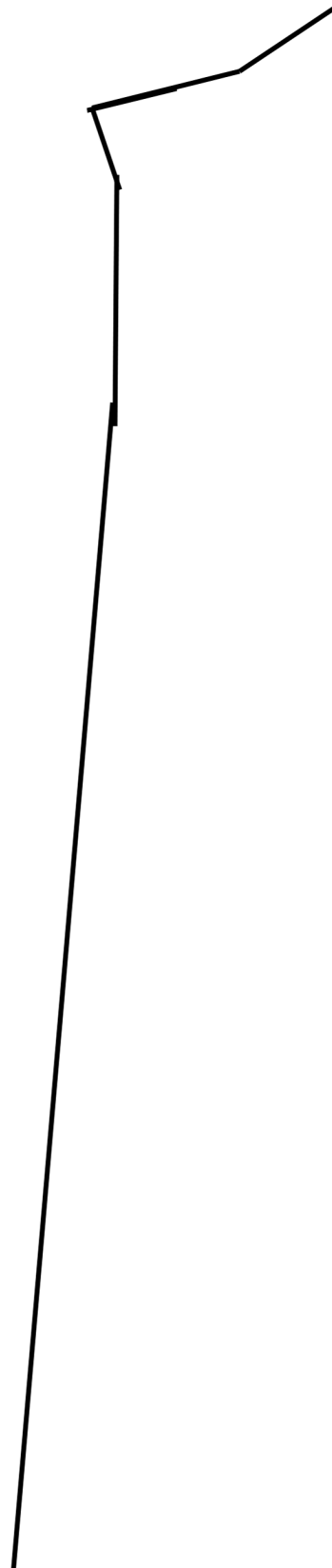
**shirt**

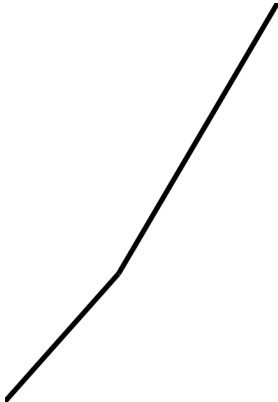
cut 2 on fold,  
one front + one back

›it's always  
*autumn*

stretch







# **sleeve**

cut 2 on fold

stretch



FOLD





also cut:

NECK BINDING  
2.5 inches high  
by 26 inches wide  
(stretch goes along width)

SLEEVE CUFFS x2  
6 inches high  
10 inches wide

HEM BANDS x2  
6 inches high  
21 inches wide

